

6353EHTA

EMERGENCY TROLLEY

GB401

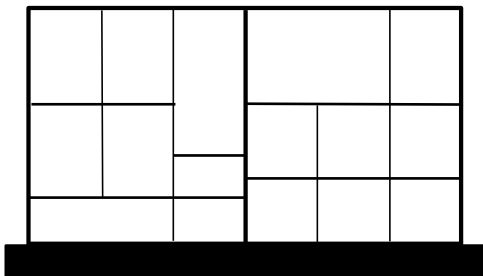
Trolley specifications:

- Over all height 1000mm excluding defibrillator tray and IV pole.
- Over all frame size 630mm W x 530mm D.
- Guardrail 38mm on back and sides.
- Pull out slide 450mm W x 400mm D.
- Four lockable drawers:
 - 1 x 75mm H x 520mm W x 350mm D.
 - 2 x 125mm H x 520mm W x 350mm D.
 - 1 x 175mm H x 520mm W x 350mm D.
- Full width aluminium drawer handles.
- Push handle.
- Defibrillator Tray.
- IV Pole.
- O2 Carrier.
- Wall buffers.
- Castors: 2 x 125mm plain, 2 x 125mm braked.



*Drawer dividers in top drawer (1) and bottom drawer (2) as shown.

(1)



(2)

